

PROV. S. XVII - 1888 - 44-59
HESXIII

PROVIDENCE, R. I.
CITY ENGINEER'S OFFICE
STREET LINE DEPT.

May 10, 1889

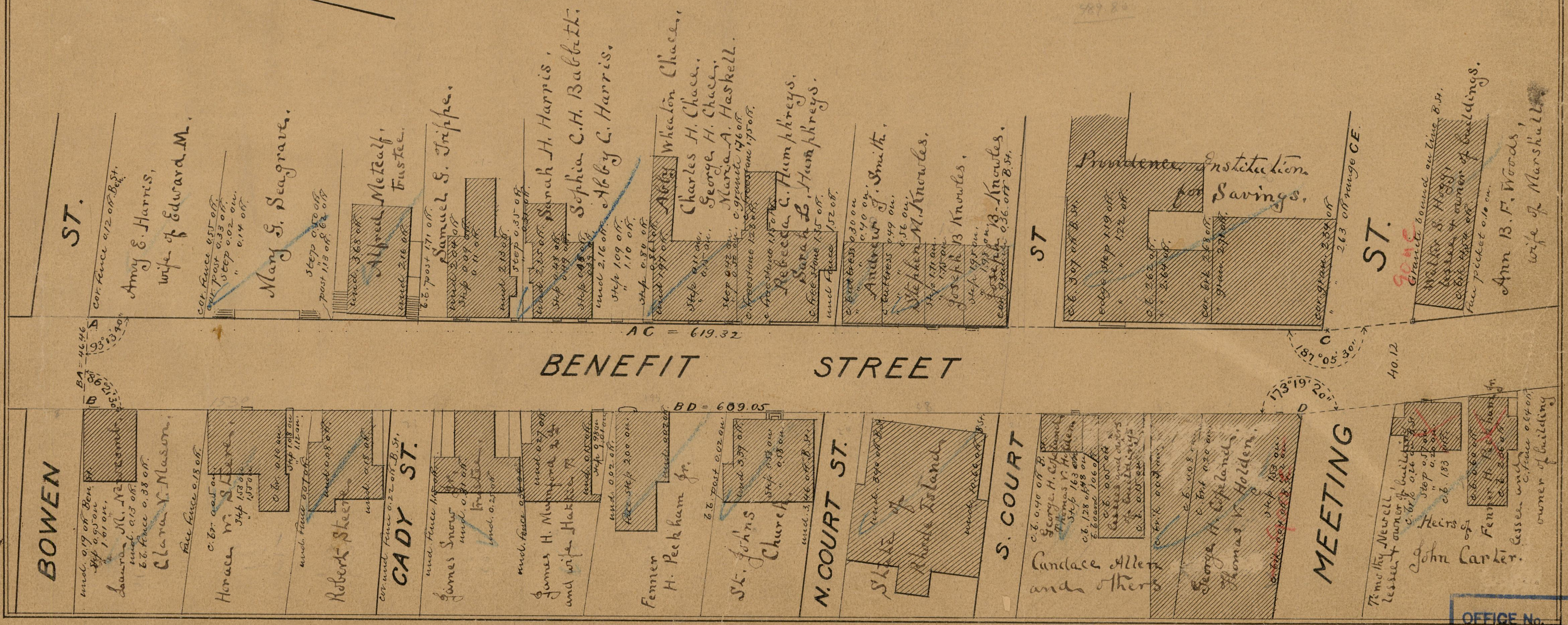
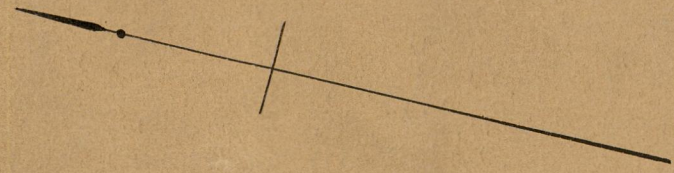
015005

Providence R. I.
This plat accompanies
our report of this date.

PLAT OF BENEFIT STREET

FROM BOWEN ST. TO PIKE ST.
IN SEVEN SHEETS
SCALE 50 FEET PER INCH.

617.32	609.05
717.84	357.37
71.18	337.61
76.94	116.14
275.38	23.27
370.58	782.75
224.74	500.07
353.05	122.64
274.32	716.77
18.28	66.68
313.77	547.87
346.14	697.87
267.64	41.78
42.75	476.00
287.80	



BA = 46.46
BC = 100.00
CD = 100.00
AD = 132.00

AC = 619.32

BD = 609.05

40.12

173° 19' 20"

BOWEN

CADY ST.

N. COURT ST.

S. COURT

MEETING

OFFICE No. 10032
DRAWER 83
SHEET 891

83
B-91